

Configuration Wired or Wi-Fi connection external player

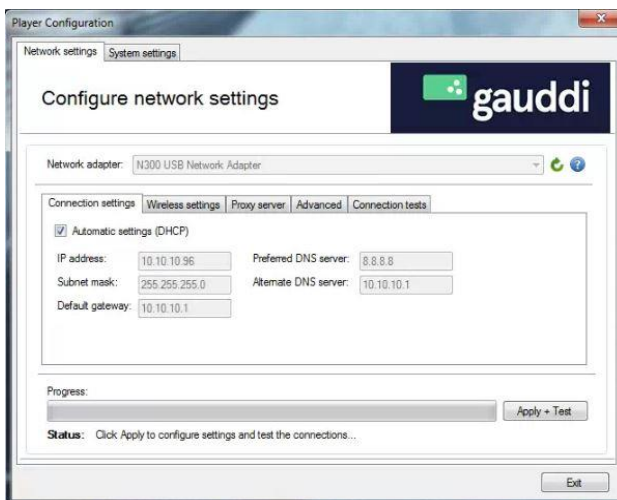
1. Connect keyboard and mouse to the player (usb)
2. Press the 'C' key on the keyboard



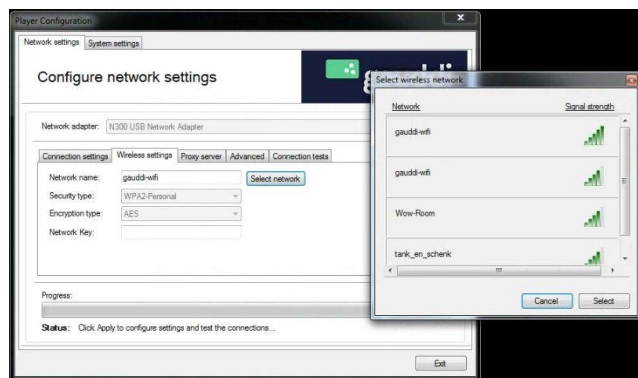
3. If you do not see a mouse cursor you can visualize it by using the following keys combination: CTRL + ALT + SHIFT + M
4. Click 'Yes' and player will reboot
5. Check the box 'Automatic settings (DHCP)' if you need DHCP.

If you have connected the external player with a Wired cable (preferred) then Skip step 6, 7, 8, 9.

6. At the drop down box 'Network adapter' select your Wi-Fi card
7. There appears an extra tab 'Wireless settings'

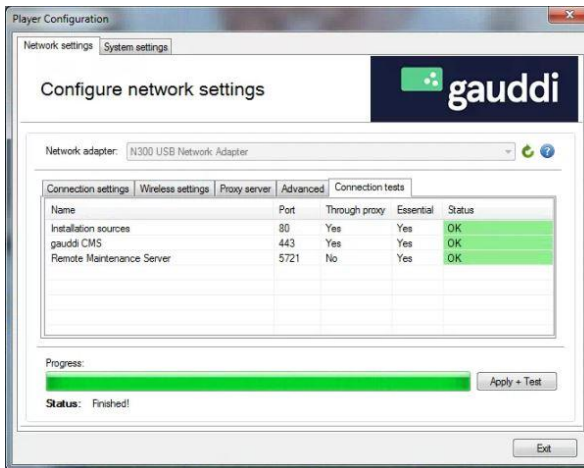


8. Select 'Wireless settings'

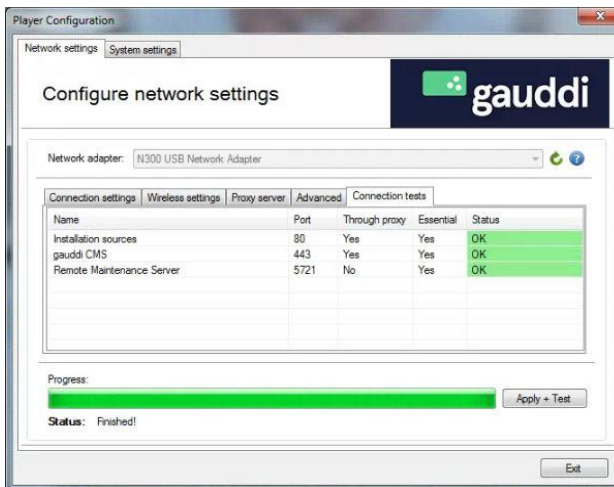


Project: Wifi Configuration external Gauddi player
 Version: 3
 Date: 22-6-2018

9. Select your wireless network



10. Type in your network key and click on 'Apply + Test'



11. All tests should be 'OK'
12. If one or more fail, try "Apply + Test" again
13. If one or more fail again. Please check if the failed network port is open for outbound traffic.
14. Click on 'Exit' and 'OK' to re-enable Writefilter.